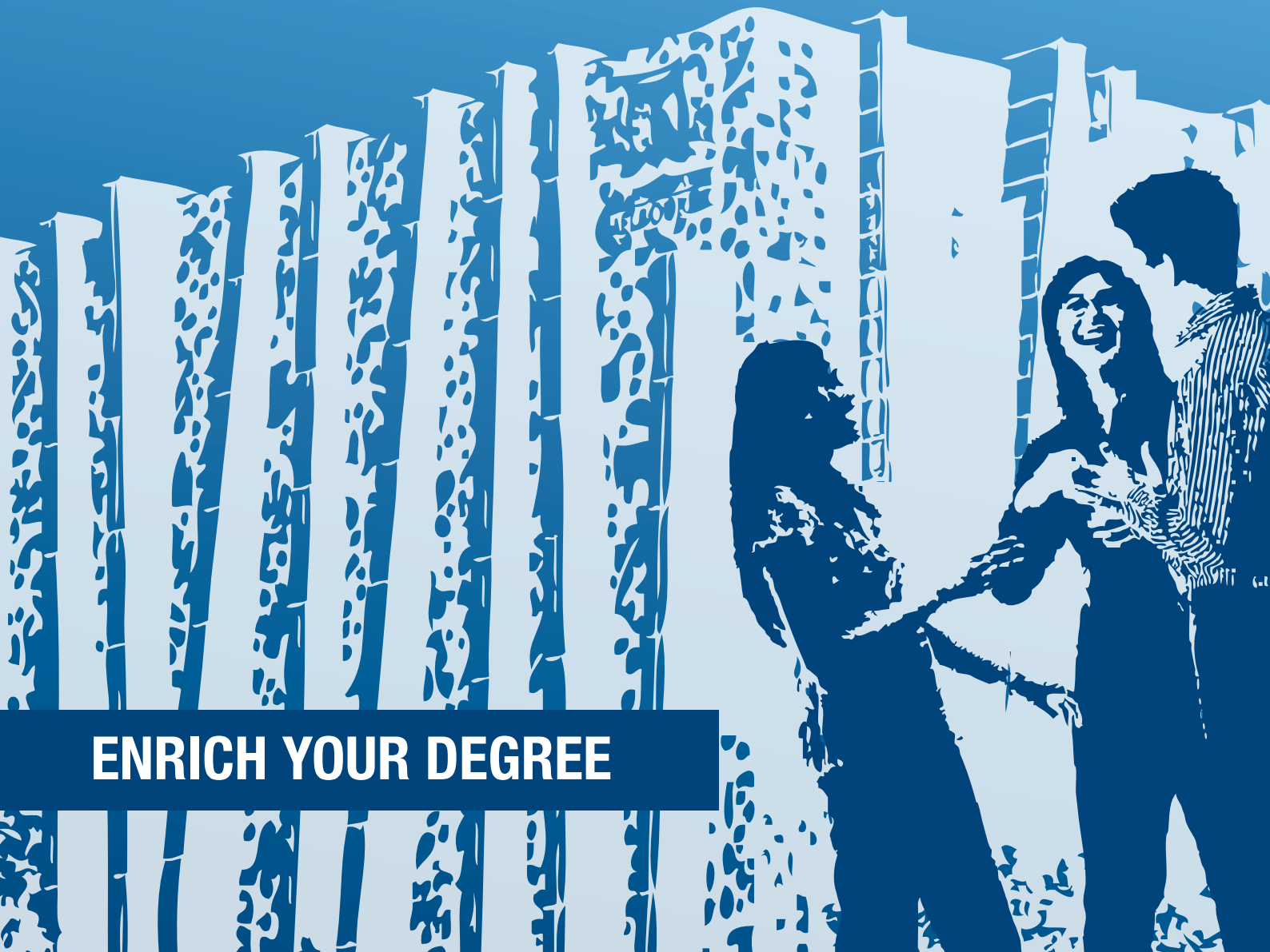




GRADUATE SCHOOL OF
BUSINESS & ECONOMICS



ENRICH YOUR DEGREE

01

Introduction

Welcome	4
Student profile	5

02

My Study

Individual Consultations	7
Graduate Peer Mentoring Program	7
The PASSI Program	8
Graduate Enrichment Program	9
Maths Refresher Program	9
Helpsheets	10
The AIM Program	10
Writing Hub	11
TLU Library	11

03

My Career

My Career Programs	13
BECC Workgroup on Careers Online	13
Initial Career Interview	14
Individual Consultations	14
Drop-in Sessions	15
Graduate Careers Program	15
Career Mentoring Program	16
Career Circles	16
Career Roundtable	16
My Work Integrated Learning (WIL)	17
Melbourne Business Practicum	17
Volunteer Opportunities	17
Internships	17
My Career Resources	18
Online CV	18
Online Resources, Help Sheets & BECC Library	18
LMS Community – BECC	18
My professional networks	19
The Australian Marketing Institute (AMI)	19
Australian Human Resource Institute (AHRI)	19
Accounting (ICAA and CPA)	19

04

My Experience

My Community	21
Welcome Function	21
Graduation Dinner	21
E3 Expo	21
My Leadership	22
Creating Future Leaders Series	22
Student Host Program	22
Community Volunteering	23
Student Ambassador Leadership Program (SALP)	23
Case Competitions	23
My Global Opportunities	24
Student Exchange	24
Global Business Practicum	24
My Clubs and Societies	25
Graduate School of Business and Economics Student Association	25
Student Entrepreneurs Agents of Change	25
Graduate Student Association	25
AIESEC	26
Financial Management Association of Australia	26
Graduate Consulting Group	26

05

Staying connected

GSBE Newsletter	27
The Echo	27
Facebook & Twitter	27

WELCOME

from the Deputy Dean and Director, Graduate School of Business and Economics



At the Graduate School of Business and Economics (GSBE), we are committed to providing you with a dynamic and rigorous learning environment with excellent facilities and resources. One of our primary goals is to produce graduates who are suited to the challenges of changing workplaces in the twenty-first century: to empower you with skills to engage with local and global communities.

We offer a comprehensive program of activities and services that support your learning, develop your skills and enrich your degree. In this brochure you can find out all about the specialist services and tailor-made programs we offer through our dedicated Teaching & Learning Unit, Business and Economics Careers Centre and Student Experience Team.

The activities and services described in this brochure have all been specifically designed to add value to your degree, help you gain the most from your time at the Graduate School of Business and Economics and give you a competitive edge in the job market. I strongly encourage you to take advantage of these opportunities and look forward to hearing about your achievements.

Professor Greg Whitwell

Deputy Dean and Director, Graduate School of Business and Economics

STUDENT PROFILE

Cecilia Chan

Master of Management (Accounting)

Faculty Postgraduate Merit Scholarship Recipient, 2007

ACC-AustCham Scholarship Recipient, 2010 / 2011

Shortly after concluding her graduate studies in December 2010, Cecilia was awarded a scholarship with the China-Australia Chamber of Commerce Beijing (AustCham Beijing). During her time at the GSBE, she was involved in numerous extracurricular and career development activities:

- 2007: Representative of the University of Melbourne at the Dragon 100 Young Leaders Forum in Hong Kong and Henan, China
- 2008: Mentee of the Career Mentoring Program
- 2009: Participant in the Global Business Practicum in Beijing, China
- 2010: Mentee of the Career Mentoring Program
- 2010: Winner of the GSBE Student Association Strategy Presentation Challenge hosted by ANZ

“I find that employers often look for the three ‘Es’ in an individual: whilst ‘Education’ and ‘Employment history’ serve to qualify technical expertise (i.e. the hard-skills), ‘Extra-curricular activities’ serves to illustrate employable skills (i.e. the soft-skills). Extra-curricular activities not only show that you are a well-rounded individual and a good team-player, but also help define your individual qualities and values.”



Cecilia delivering the student address at the GSBE Graduation Dinner

MY STUDY

Teaching and Learning Unit

The Teaching and Learning Unit (TLU) provides services that can enhance your learning outcomes in the areas of:

- Academic writing
- Critical analysis
- Efficient reading
- Team work and collaboration
- Grammar and sentence structure
- Research
- Referencing
- Time management
- Assignments
- Presentations
- Maths and statistics
- Exam preparation

Our programs range from discipline-specific academic skills programs to cultural transition programs. We act to make your learning as enjoyable, successful and rewarding as possible.

Find us on Level 5 of The Spot.



Individual Consultations

Book an individual consultation session and receive expert advice on written assignment structure, research, grammar, referencing, and academic style. Our TLU Learning Advisors will offer invaluable tips on exam preparation, time management, effective reading and critical thinking skills. Consultations with our Maths and Statistics Advisors are also available.

“I have noticed that my writing has improved following the advice given. My essays are clearer in structure and content. I did notice the change and it did reflect on my marks.”
Graham, Master of Management (Accounting)

Learn more about consultations at:
www.tlu.fbe.unimelb.edu.au/students/consultations

Graduate Peer Mentoring Program

The Graduate Peer Mentoring Program offers new students the opportunity to meet with current students who can share their insights and expertise about the Graduate School, the University and, more widely, life in Melbourne. New students meet with Mentors in relaxed, social situations to learn about Faculty expectations, gain valuable tips and insights and discover fun ways to enjoy being a grad student. The Graduate Mentoring Program runs over the first four weeks of semester and is a fantastic way to extend your social network.

“It is a great program for new students like myself. I really enjoyed the Graduate Mentoring Program and gained useful insights from my mentor.”
Matt, Master of Business & Information Technology

Register online at:
www.tlu.fbe.unimelb.edu.au/students/graduate/mentoring_opportunities.html





Maths Refresher Program

The Maths Refresher Program assists students with mathematical concepts that are essential for graduate-level subjects. In each session, opportunities exist for you to practise concepts and receive feedback. The Maths Refresher Program comprises a two-hour session twice a week between Weeks Two to Eight of semester.

Areas covered include: index laws, linear equations, simultaneous equations, quadratic expressions and equations, set theory, probability, summation notation, mathematical expectations, variance and standard deviation, rules for evaluating the derivative: differential calculus, optimisation, the exponential function and logarithms, continuous growth and the natural exponential function, Euler's constant, derivatives of the natural exponential function and logarithms.

Book a meeting with our Maths Consultant at:
www.tlu.fbe.unimelb.edu.au/students/graduate/maths_refresher.html

Graduate Enrichment Program (GEP)

Attend our free, weekly Graduate Enrichment Program sessions and enrich your studies both academically and socially. You will have a chance to meet other students in a relaxed environment. Through practical experience, GEP can also help you to develop your academic learning and literacy skills, your abilities to research effectively and your presentation skills.

You can find session details at:
www.tlu.fbe.unimelb.edu.au/students/graduate/GEP.html

The Peer-Assisted Study and Skills Integration Program (PASSI)

The Peer-Assisted Study and Skills Integration (PASSI) program offers you the opportunity to work in small groups with other students to revise academic material and develop important employability skills.

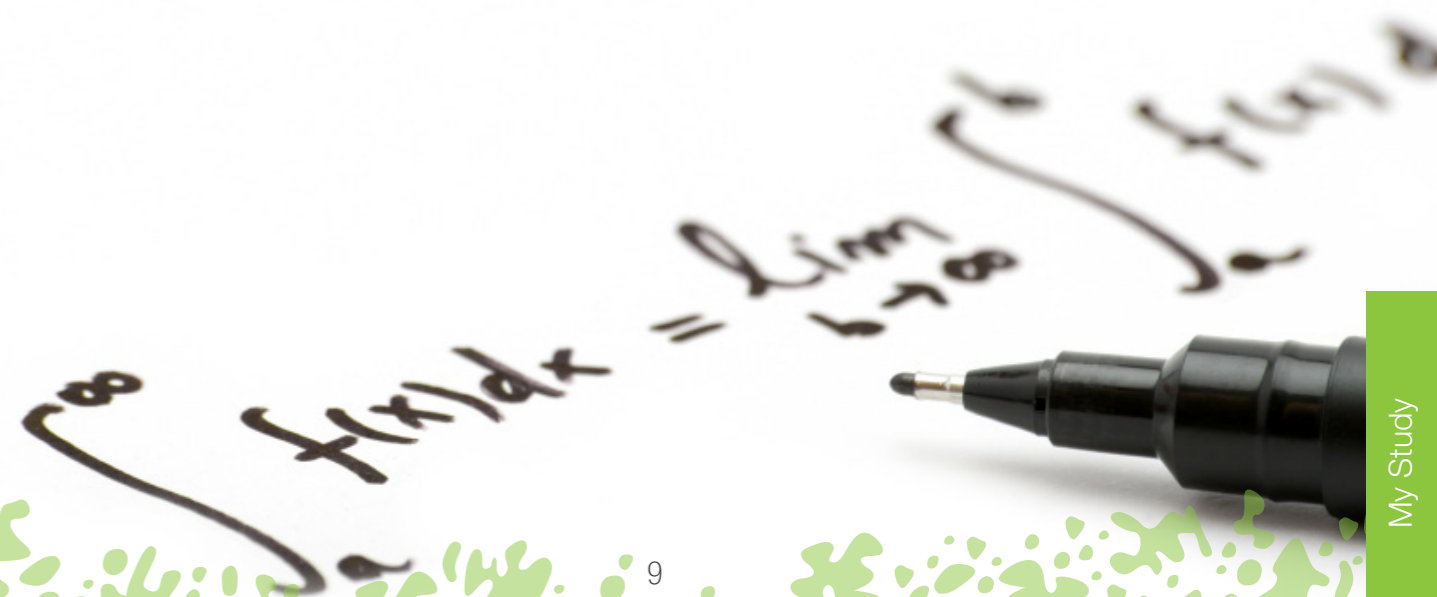
In PASSI sessions, you will have an opportunity to discuss questions and concerns with other students, review lecture materials collaboratively, develop critical study and employability skills, and form valuable social and study networks.

PASSI sessions are facilitated by a senior student who has performed well in the subject and has received specialised training.

PASSI is available to students enrolled in the subjects: Organisational Fundamentals, Financial Decision Making and Quantitative Methods for Business.

“I think PASSI is great because not only can we ask questions of our classmates, we can also share something. In the PASSI session I can not only learn, but also learn how to share my opinion.”
 Vanessa, Master of Management (Accounting)

Learn more about PASSI and register for a group at:
www.tlu.fbe.unimelb.edu.au/students/graduate/PASSI.html



Helpsheets

We provide over sixty Helpsheets that cover almost every academic skill you could think of! The helpsheets are arranged into six broad areas that cover writing skills, text types, citing and referencing, study skills, research skills and maths and statistics. Our Helpsheets are available in hard copy from the TLU or online.

“Over my two years studying in the GSBE, I have used the TLU helpsheets over and over again. They have been a great resource for me.”

Cindy, Master of Commerce (Management)

Take advantage of the wide variety of helpsheets at:
www.tlu.fbe.unimelb.edu.au/learningresources/tlu_helpsheets.aspx

The AIM Program

The AIM Program is a pre-semester program for Master of Management students. New and continuing students are welcome to participate. The AIM Program comprises three foundational modules to help you build up the academic skills you need for graduate study in Business and Economics subjects. These academic skill areas include: Academic Learning Skills, Information Literacy and Mathematics.

As a student in the AIM program, you receive extensive academic support and personalised feedback from our TLU Learning Advisors as you work on a team-based assessment task. The AIM Program is offered in intensive mode five days a week, two weeks prior to the beginning of each semester.

For details about the AIM program visit:
www.tlu.fbe.unimelb.edu.au/students/graduate/theaimprogram.html

Writing Hub

The TLU Writing Hub is a space for you to work on assignments while obtaining specialist assistance from our TLU Learning Advisors staff and also from peer mentors. We have a number of laptop computers available for you to use in the Writing Hub, which is an ideal space for your individual study or to work with your study group.

More information about the Writing Hub is available at:
www.tlu.fbe.unimelb.edu.au/

TLU Library

Our Library contains a range of books and journals related to commerce disciplines and study skills. Borrowing is free for graduate students upon presentation of your student card at the Reception Desk of the TLU, Level 5 of The Spot.

View the TLU Library catalogue at:
www.tlu.fbe.unimelb.edu.au/teaching_staff/resources/TLU_Library.html



MY CAREER

Business and Economics Careers Centre

The Business and Economics Careers Centre (BECC) is the first Faculty based Careers Centre at the University of Melbourne and provides tailored support services for students of the Graduate School of Business and Economics, as well as engagement opportunities to employer and industry organisations.

With the aim to “ACCESS, ENGAGE, and ACHIEVE” we offer innovative, user-friendly and relevant career programs which add value to the other career related services and resources available at the University.

We recognise that our richly varied student group represents a broad range of career stages and cultural backgrounds, and our objective is to facilitate career enhancement opportunities with high standard career outcomes for all, through activities in:

- Self-awareness
- Opportunity awareness
- Career knowledge and network building
- Job search and workplace skills

Find us on Level 1 of The Spot.

BECC

My Career Programs

BECC Workgroup on Careers Online

The BECC is using a new information management system - Careers Online. Closely linked to the University's central Careers & Employment site, you now have even more information at the click of a button. This will make it easier to stay on top of your appointments, job and internship opportunities, events and other careers related activities. Similar to the University of Melbourne Portal, when you log into the Careers Online site through the BECC homepage, you enter into the BECC workgroup where you have your very own personalised hub for all the information you need to help you on your path to a successful career. At the start of your course you will also become a member of the “GSBE WIL Opportunities” workgroup.

Throughout the year all BECC events, WIL Opportunities and appointments will be advertised through these two workgroups, so be sure to log in regularly in order to stay informed.

“I received very clear guidance for CV writing and also tailored interview skills counselling. Without these professional services, I could not imagine myself being involved in great opportunities such as becoming an intern as an equity analyst, a team member in the Melbourne Business Practicum with ANZ and successfully attaining part-time jobs. I encourage that every student take the initiative and make the most of this valuable service.”
Master of Finance Student 2010

Find out more by visiting: www.gsbe.unimelb.edu.au/careers





Initial Career Interviews

Start with an advantage! At the beginning of your studies attend an initial career interview to discuss your career aspirations and familiarise yourself with the programs available through the BECC and the Graduate School. Your 20 minute interview with a professional careers consultant will enable you to map out a personal career development plan.

To book an appointment log into your BECC workgroup through the BECC website and select a GSBE Initial Career Interview time that suits you.

“I want to thank you for your help in my job search last semester, as well as for your very valuable and timely advice and support. The Initial Career Interview, the program and your help in customizing my CV for this application, all proved instrumental in getting this job opportunity and, in general, assisting my transition from an academic workplace to a business workplace.”
Pedro Olaya, 2010 MBIT student

For more information, visit:
www.gsbe.unimelb.edu.au/careers/programs/initial-interviews.html

Individual Consultations

Are you sometimes uncertain of what steps to take throughout your studies to achieve your career goals? Do you wonder how to go about the job seeking and recruitment process? Talk to our experienced careers consultants! You can schedule a 30-minute appointment for an individual consultation through the appointments section of your BECC workgroup. Simply select a GSBE Career Consultation time that suits you.

“One-on-one consultations have provided a way to critically analyse my curriculum vitae and cover letters to ensure that I am illustrating my strengths to potential employers in the most effective manner. Due to polishing my curriculum vitae and cover letter, I have often made it past the online application phase of graduate and vacation employment.”
Elka Johansson, Master of Management (Accounting)

For more information, visit:
www.gsbe.unimelb.edu.au/careers/programs/consultations.html



Graduate Careers Program (SKIL90003)

Looking to gain knowledge and build your skills in key career development areas? The Graduate Careers Program workshops are designed to assist you in developing your career strategies and plans, as well as provide practical tips and insights. Attend our semester-long Graduate Careers Program weekly or simply attend the sessions that are of most interest to you.

No need to enrol; once you attend at least ten sessions in a semester, the subject will appear on your academic transcript.

“The GCP classes have a relaxed environment to find out more about myself, the skills employers are looking for and interact with peers.”
Julie, Master of Management (Accounting) student 2010

For more information, visit:
www.gsbe.unimelb.edu.au/careers/programs/hours.html

Drop-in sessions

Want to have a quick chat about your CV, cover letter or a job application? Perhaps you have a couple of career related questions.

For a 10 minute consultation without having to book ahead, visit the Business & Economics Careers Centre during Drop-in every Tuesday from 12:00 – 1:30pm, during semester. Any other additional drop-in times will be advertised in the GSBE Student Newsletter. It is advisable that you attend a Drop-in session before booking for an extended consultation.

For more information, visit:
www.gsbe.unimelb.edu.au/careers/programs/drop_in.html





Career Mentoring Program

The Career Mentoring Program will expose you to industry professionals in the area of your studies and chosen career destination. The program will assist you in gaining understanding and knowledge of the industry of your choice through a mentoring relationship that focuses on your career and personal development.

In this program students are paired with an experienced business professional who will provide guidance and advice throughout the course of the academic year. Mentees will gain practical industry knowledge, receive feedback and advice on career strategies and recruitment and access established business networks. This program requires attendance at a compulsory information session and an online application submitted by March 31.

“The Career Mentoring Program has been very helpful and has surely made my graduate studies a lot more meaningful and fruitful. It was great to have the opportunity to talk to somebody from industry who was very knowledgeable on management consultancy and HR. More importantly, my Mentor made this a very interesting learning experience.”

Cherry Ann Santos, MHRM

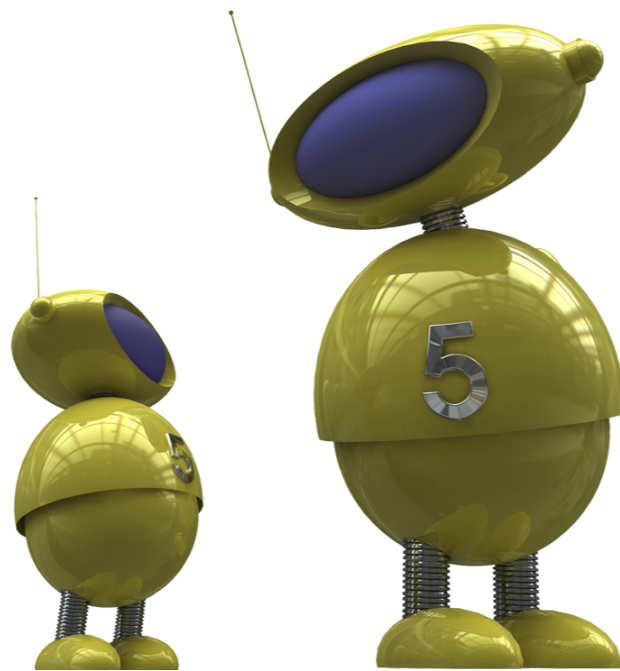
For more information visit:
www.gsbe.unimelb.edu.au/careers/programs/mentoring_program.html

Career Circles

Looking for opportunities to get involved in career development activities and industry engagement events? Participate in our Career Circles to gain insights and advice directly from employers and recruiters, hear from expert and alumni panels and get advice on presentation and communication skills. Career Circles take place throughout the year and are advertised through the GSBE Newsletter, online and through the events section of your BECC workgroup.

Career Roundtable

Want to discuss your career plans and queries with your peers and Careers staff before you complete your study? These career roundtable sessions are organised to cover final career strategies and ‘next step’ planning. Career Roundtable is recommended for students completing their studies in the semester.



My Work Integrated Learning (WIL)

Melbourne Business Practicum (MBP)

Here is a chance for you to apply your considerable knowledge into a real workplace environment. The Melbourne Business Practicum (BUSA90473) is an accredited subject and is conducted twice a year, during the months of February and July. In teams of four you will work intensively on a key business project hosted by a Melbourne organisation e.g. ANZ, KPMG or the Royal Botanic Gardens.

“As part of my career plan, I joined the Melbourne Business Practicum. This program provided me a great opportunity to apply knowledge to a project in the real business world. The practicum was an absolutely cutting edge program for my career development and all my professional skills were greatly improved.”
 Ji Sun, Master of Finance 2010

Volunteer Opportunities

Volunteering your knowledge to a not-for-profit organisation is also a valuable way to have a WIL experience. This adds value to your CV as it shows potential employers that you are a socially responsible individual.

A further extension to the volunteer program is the WIL Volunteer Regional Business Project, where you work in a team on a business project, during February or July each year (similar to the MBP) and home stay with local families. This is an ideal opportunity to experience regional communities in Victoria and build employment opportunities.

Internships

Are you interested in becoming a paid intern with a Melbourne company? If so, keep an eye on the GSBE Student Newsletter, BECC website, GSBE WIL Opportunities workgroup and targeted emails. Internship opportunities are offered throughout the year as placements become available. Selection is competitive and students who continuously build their employability skills enter the selection process with an advantage.

“I very much appreciate the excellent connections to employers created by the BECC. As a result of the help I received, I was offered a work placement in my first semester and another one in my second semester. These two internship programs were all organised by the BECC and I'm grateful to have access to these opportunities.”
 Scott Lin, Master of Finance Student 2010



My Career Resources

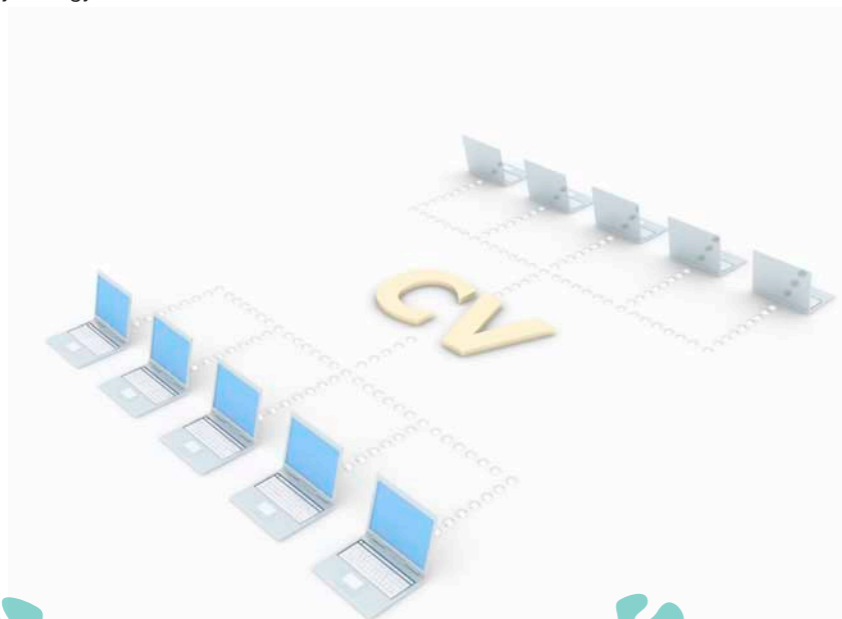
Online CV

The Online CV tool enables you to construct your CV/ resume using a standard one page format. You can use the purposefully created template as an ideal starting point to build and develop your professional resume.

Online Resources, Help Sheets & BECC Library

You will find useful links, help sheets and other web resources available online to simplify the process of employment preparation and careers research.

In addition to our online resources, the BECC also has an extensive book and DVD library from which students are able to borrow books and DVDs regarding everything from application advice and graduate outcomes, to 'a day in the life of ..' and positive psychology.



LMS Community – Business and Economics Careers Centre COM_00373

The Online BECC Community on the Learning Management System (available through the Student Portal) contains information and activities to assist you in understanding your professional progress including: Career Development, Self Awareness and Career Action Plan. The program has been designed for GSBE students in the early stages of their studies and is intended to compliment other BECC programs such as the GCP, Internships, MBP, Individual Consultations and the Career Mentoring Program.

My Professional Networks

We offer professional membership opportunities with various institutes and societies. Gain a competitive advantage, keep up to date with industry trends, network with industry professionals and develop your skills by subscribing today. Find out more by visiting: www.gsbe.unimelb.edu.au/experience/memberships.html

The Australian Marketing Institute (AMI)

The Graduate School of Business and Economics and the Department of Management and Marketing have engaged in a corporate membership agreement with the Australian Marketing Institute (AMI), which offers our marketing students the opportunity for a free annual AMI membership. Membership is valid for one year and is renewed in August.

- Develop your knowledge of marketing in the professional industry, through seminars and networking.
- Build professional relationships with fellow marketers.
- Gain insight into the professional marketing community and environment.



Accounting (ICAA and CPA)

Accounting students are eligible for free student membership of the Accounting Professional Bodies: CPA Australia and the Institute of Chartered Accountants Australia.

- Keep up to date with the latest industry developments.
- Access professional development, networks and jobs board.

Australian Human Resource Institute (AHRI)

The Graduate School of Business and Economics has partnered with the Australian Human Resources Institute (AHRI) to offer free membership to our full-time Human Resource Management students.

- Access to essential HR resources and professional networks.
- Access to AHRI's HR careers website.
- Access to AHRI's monthly industry magazine and discussion forums.

MY EXPERIENCE

The Student Experience Team

The Student Experience Team provides opportunities for you to become engaged in university life beyond the classroom. Participating in our activities, events and programs is a great way to meet fellow students while developing skills that employers will value.

Whether it is going on an international exchange, volunteering for an NGO, participating in a case competition or becoming a student host on O-Week, your involvement will add value to your degree and enable you to become an active global citizen.

Find us on Level 1 of the Spot.

My Community

Welcome Function

At the beginning of each semester, the GSBE welcomes all new and current students to gather at an iconic Melbourne Venue. Meet your Academic Program Director along with other key academic and professional staff and build your professional network. No application is required. Invitations are sent to all students.

Graduation Dinner

At the end of each semester, we host a congratulatory Graduation Dinner to formally recognise the achievements, hard work, commitment and successes of our graduands. Celebrate your accomplishments with your fellow graduands, academics and professional staff over pre-dinner drinks, a three course dinner, and a night of awards, music and dancing.

- Semester 1 – July
- Semester 2 – December

All graduating students from each semester are eligible to attend.

E3 Expo



The E3 Expo is organised as an academic enrichment showcase of opportunities that occurs in Week 4 of each semester. Find out more about the many student clubs and societies that you can join, as well as community groups and services that are willing to help you ease into university life. All students are encouraged to attend the E3 Expo.

- Semester 1 – March
- Semester 2 – August





Student Hosts 2010

Student Host Program

The Student Host Program is your chance to give back to your fellow students by volunteering during Orientation Day and the Pre-Semester Program. As a Student Host, you will help new students settle into campus life by conducting campus tours, answering any questions and acting as their mentors during their Pre-Semester Program case presentation. All hosts receive training in communication, team work and leadership skills.

- Semester 1 – February
- Semester 2 – July

“The most exciting thing is that you meet new people from diverse backgrounds, share knowledge, make friends and it’s a great opportunity to get involved with members of the Faculty.”

Kamran Pervaiz, Student Host

Register online at:

www.gsbe.unimelb.edu.au/experience/student_host.html

My Leadership

Creating Future Leaders Series

Creating Future Leaders is the flagship seminar series of the GSBE. Every month, we invite high profile industry leaders in Australia and overseas to share with you their career experiences and insights. Be inspired by their stories and gain insights into future career prospects and leadership opportunities.

Monthly seminars:

- Semester 1 – March, April and May
- Semester 2 – August, September, October

“Ben and Jerry’s talk today was truly inspiring, - highlighting through their own story the importance of corporate social responsibility and how we can all do well by doing good.”

Professor Margaret Abernethy, Dean of the Faculty of Business & Economics.

For more information and to register for upcoming sessions, visit: www.gsbe.unimelb.edu.au/experience/leadersseries.html



Ben Cohen and Jerry Greenfield
Co-founders of Ben & Jerry's Ice Cream

Community Volunteering

There is an extensive range of on and off-campus community volunteering and leadership programs available through various University units and networks. For example the University’s Leadership, Involvement and Volunteering Unit (LIVE) hosts a range of programs and resources which allow students to achieve a breadth of experience and knowledge through unique volunteering opportunities.

- Build a lifetime network of friends and professionals,
- Develop your communication, leadership and teamwork skills.

For more information visit:

www.services.unimelb.edu.au/live and
www.ampersand.org.au



Student Ambassador Leadership Program (SALP)

The Student Ambassador Leadership Program (SALP) is an extra-curricular program which provides opportunities for young people to create networks and develop their qualities and skills via active engagement within the University and volunteering within the wider community.

You will get the opportunity to create a positive impact in a community by coming up with your own project aimed at addressing the needs of a community group, such as tutoring migrants, helping in soup vans, supervising camps for young people with disabilities and designing a life-skills program for young people at risk of homelessness. This eighteen month program is available to graduate students not enrolled in their final year.

Check the SALP stand during E3 Expo or visit the website:
www.services.unimelb.edu.au/live

Case Competitions

Solve a real business problem by applying your theoretical knowledge in one of our case competitions! This is an internationally recognised way of developing students’ business, problem solving, communication and presentation skills. We work closely with prominent companies and academic staff to bring you exciting and challenging competitions. Some competitions are open to all to apply. Others are offered as part of particular academic subjects.

“Many of the world’s most successful e-commerce ventures, Facebook, Dell.com, and even Google, started as university projects. The Internet Marketing competition gave students the task of developing a realistic plan for an internet business. The viability of their business ideas was analysed by industry leaders who have developed successful e-commerce ventures in Australia.”
Brent Coker, Lecturer in Marketing

My Global Opportunities

Student Exchange

Gain an international perspective on your discipline by going on exchange! We offer you the opportunity to study for one semester at one of our partner leading international business schools around the world. The University's exchange and study abroad programs are managed through the Melbourne Global Mobility Office.

- 1.5 year course: apply in semester 1
- 2 year course: apply in semester 1 or 2

“Going on exchange is a life-changing experience. During my time in Italy, I've improved my language skills, learned about another culture, experienced a new way of learning, all whilst making new friends from all around the world.” Alicia Milan, on exchange to Luigi Bocconi University, Milan

To find out more, visit:
www.gsbe.unimelb.edu.au/experience/exchange



GBP Students, Summer 2010 in Bangkok, Thailand

Global Business Practicum

The Global Business Practicum (GBP) is an intensive, for-credit subject in which you experience culture, society and real-life business practices first hand whilst applying your academic skills. In teams, you will be assigned to a host company to undertake a real business project. You will surely gain a deeper understanding of the international business world and empower yourself to take the lead professionally, academically and culturally. The subject provides an in-country study experience. Destinations include Singapore, Bangkok, Beijing and Kuala Lumpur.

- Summer – January
- Winter – July

“I would definitely recommend the GBP to other students because it gives them the opportunity to apply their knowledge to real situations and to cope with the working environment. Moreover, the whole experience is set in a foreign country, which allows the students to experience a different working and cultural reality.”
 Filippo Baschera, GBP Bangkok

If you would like to apply, you should discuss the option with your relevant Academic Program Manager to confirm eligibility within your specific degree program.

For more information visit:
www.gsbe.unimelb.edu.au/experience/GBP.html

My Clubs and Societies

The GSBE is home to a wide array of student clubs and societies.

Graduate School of Business and Economics Student Association

The Graduate School of Business and Economics Student Association is your student association - run by students for students. They offer exciting social and professional networking opportunities such as inter-uni bbqs and morning teas; academic development opportunities including academic writing and case competitions; and cultural awareness activities in and around Melbourne including scavenger hunts, sports trips and day excursions.

“After serving in the Association for one semester as a volunteer, I was first elected as an Events Officer and then as President. Over time, I have learned to take greater responsibility in the SA's work and have contributed to making the experience of students in the GSBE more rewarding and fulfilling. I am confident that my experience in the Association will greatly help me in my future career.”

All GSBE students are eligible to join. Membership is free. Check the Student Association website and sign up anytime during the semester.

www.gsbesa.org



Student group booths at the E3 Expo

Student Entrepreneurs | Agents of Change

If you have a passion for entrepreneurship you shouldn't miss the seminars, workshops and pitch competitions organised by the Student Entrepreneurs | Agents of Change. Gain insight from successful entrepreneurs, participate in exciting competitions and win great prizes, develop your organisational skills by joining their events team.

“Being involved in the Student Entrepreneurs club has given me the opportunity to improve myself through developing new skills and putting classroom knowledge into practice. It was also a great opportunity to network with people from the business community and develop my level of confidence in meetings with them.”
 Tian Yang

Sign up at the SE | AoC stand during E3 Expo or visit
www.agentsofchange.org.au

Graduate Student Association (GSA)

The Graduate Student Association represents graduate students at the University of Melbourne and has more than 30 affiliated graduate student groups. Participate in their social and cultural events, meet and network with fellow graduates.

Stop by the GSA stand during E3 Expo or visit:
www.gsa.unimelb.edu.au/

AIIESEC - University of Melbourne

Are you a student who is internationally aware, interested in global issues, and committed to empowering the youth? Present in over 107 countries and territories and with over 50,000 members, AIIESEC is the international platform for young people like you to discover and develop your potential so as to have a positive impact in society. Go on an international internship with some of the world's top companies and NGOs, lead a local team of over 30 students or organise a conference for students from all over the world. AIIESEC's local chapter at the University of Melbourne offers leadership experiences that are hard to find elsewhere. Open to all undergraduate, graduate students and recent graduates.

Stop by the AIIESEC stand during E3 Expo or visit the website: www.aiesec.org/australia/

Financial Management Association of Australia (FMAA)

This club assists in developing the professional skills of its members and offers students the opportunity to network with potential employers. With the continuing support of Gold and Founding Sponsor, the Macquarie Group, the FMAA actively promotes the career awareness of students and facilitates involvement in business-related activities. Open to all students.

Check the FMAA stand during E3 Expo or visit website: www.fmaa.com.au

Graduate Consulting Group

The Graduate Consulting Group provides a range of consulting services on a pro-bono basis to charities and not-for-profit organisations. The Group's presence ensures that not-for-profits have access to the skills, talent and knowledge of highly motivated, professionally educated students of the Graduate School of Business and Economics. Throughout the academic year, there are plenty of opportunities to apply theoretical knowledge in a practical setting, and make a positive impact on society and connect with the community. Open to all students.

"The Graduate Consulting Group works with charities and not-for-profit organisations to deliver value and tangible results. The GCG was conceived and is run by graduates to provide students with the opportunity to utilise skills and knowledge gained from their tertiary education. Members join us to develop their networking skills and gain exposure to consulting work."
Kevin Chin, Process & Policy Management Specialist, GCG

Check the Graduate Consulting Group stand during E3 Expo or visit: www.gcg.org.au



STAYING CONNECTED

Don't miss out on the latest news on upcoming opportunities, programs and events that build your career, enhance your studies and enrich your experience. Along with student portal notices, GSBE students can stay up to date through the following channels.

GSBE Newsletter

The GSBE is your one-stop source for the most important career, study and enrichment news and opportunities. Look out for it in your unimelb inbox, fortnightly during semester or visit www.gsbe.unimelb.edu.au/current/newsletter



THE ECHO

The Echo is a newspaper targeted directly to students of the Faculty of Business and Economics, with four issues published throughout the year. Keep up to date with the latest academic and social events and activities that are a part of the Faculty community.

You can also become involved by writing for the paper. The Editorial Committee welcomes student contributions, stories and photographs about interesting people or events within the Faculty. Writing for The Echo will help to develop communication skills and can be cited on your CV as an extra-curricular activity.

www.tlu.fbe.unimelb.edu.au/students/echo/default.html

Facebook & Twitter

Receive GSBE updates in real time!

Like our facebook page at:
www.facebook.com/MelbourneGSBE

Follow us on twitter at:
www.twitter.com/GradSchBusEco



CONTACT US

Graduate School of Business and Economics
198 Berkeley Street (The Spot)
The University of Melbourne

T: +61 3 8344 1670

F: +61 3 9349 5021

E: gsbe-enquiries@unimelb.edu.au

W: www.gsbe.unimelb.edu.au

Teaching and Learning Unit

Level 5, The Spot

www.tlu.fbe.unimelb.edu.au

Business and Economics Careers Centre

Level 1, The Spot

www.gsbe.unimelb.edu.au/careers

Student Experience

Level 1, The Spot

www.gsbe.unimelb.edu.au/experience

Publication disclaimer: The University has used its best endeavours to ensure that material contained in this publication was correct at the time of printing. The University gives no warranty and accepts no responsibility for the accuracy or completeness of information and the University reserves the right to make changes without notice at any time in its absolute discretion. Users of this publication are advised to reconcile the accuracy and currency of the information provided with the relevant faculty or department of the University before acting upon or in consideration of the information. Copyright in this publication is owned by the University and no part of it may be reproduced without the permission of the University. Authorised by: Manager, Graduate School of Business and Economics. Published by: The Graduate School of Business and Economics, 2011. CRICOS Provider Code: 00116K.